

# armor



## NH2000 UNIVERSAL FLOOR SPRING

### FEATURES

- @ Suitable for left hand, right hand, single and double action doors.
- @ No hold and 90 ° hold open options. 105 ° hold open available on special order.
- @ Max. Door weight up to 120kg in weight.
- @ Two independent valve control the closing and latching speeds.
- @ The closing action starts with the door fully open and ends at 15 ° from the closed position.
- @ Thus allowing the door to close at the desired speed.
- @ Changeable spindle insert available to suit field conditions.

### Technical Data

Spring strength		Light	Medium	Heavy
Max. Doors up to (m/m)		950	1050	1250
Max. Door weight up to		70kg	110kg	130kg
Double action door		Yes	Yes	Yes
Closing and Latching speed variable by valve adjustment		Yes	Yes	Yes
Back-Check, mechanical		Yes	Yes	Yes
Hold-open point	90 °	Option	Option	Option
	105 °-180 °	Option	Option	Option
No Hold-open point		Option	Option	Option
Dimensions in mm				
Length X Width X Height		289 X 146 X 51		

## Selectable functions

### Door Control

Two independent valve control the closing and latching speeds.

The closing action starts with the door fully open and ends at 15° from the closed position.

At this point the latching valve takes over, thus allowing the door to close at the desired speed.

### Back-Check

The integral mechanical Back-Check helps to prevent damage to the door and wall in the event of the door being opened with excessive force.

### Hold-Open

With the Hold-Open feature (optional extra), the door can be held at angles of either 90° or 105° to 180°

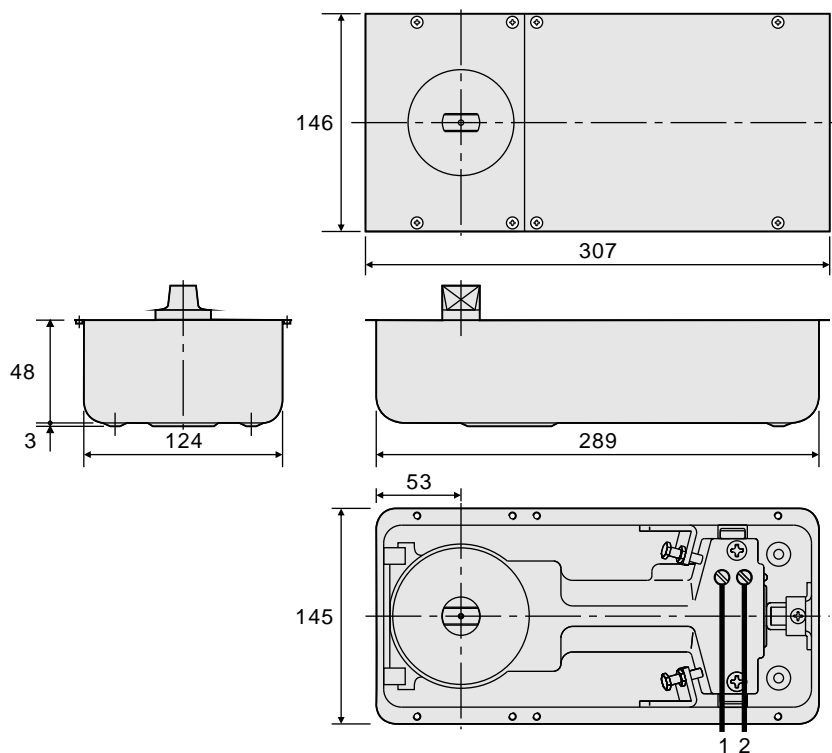
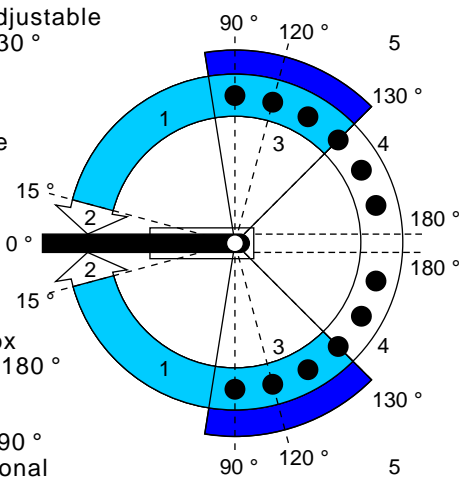
1. Closing speed adjustable range approx. 130° to approx. 15°

2. Latching speed adjustable range approx. 15° to approx. 0°

3. Back-Check approx ca. 85° ~ 130°

4. Hold-Open approx ca. 90° or 105° to 180° optional

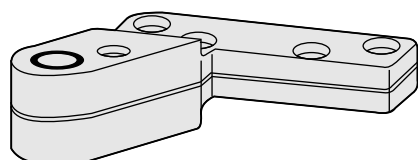
5. Door open up to 90°, 130° or 180° optional



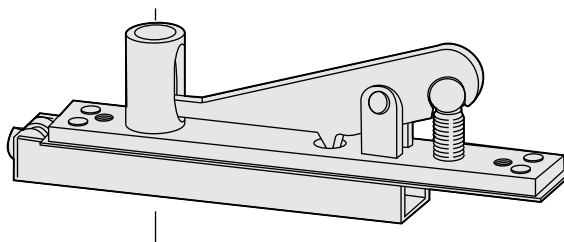
1. Closing speed Valve

2. Latching speed Valve

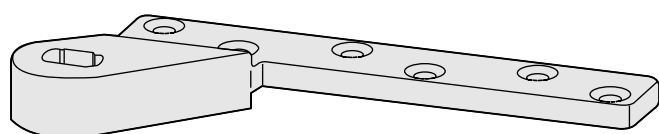
## Options and accessories



Eccentric Pivot



Retractable top centre



Eccentric arm



HENG KUOCO., LTD. — TAIWAN  
KUNSHAN HENG KUO MACHINERY CO., LTD

TAIWAN PLANT : No 136, Ren De 5, Ta-Shi, Tao Yuan Hsien, Taiwan, R. O. C

TEL : 886-3-380-2101

FAX : 886-3-380-2123

KUN SHAN PLANT : No 388 Lu Chen Road Kun Shan City China

TEL : 86-512-86186625

FAX : 86-512-57570392