

armor



DM650 UNIVERSAL FLOOR (Fire and Smoke Check)

FEATURES

- @ DM650 series adapt to universal floor with fire-proofed/smoke-prediction system. Max. Open Degree 195 ° .
- @ UL and CNS listed with attachment. adapt to Aluminum Doors. Wooden door, metal door and glass door.
- @ Two independent valve for closing and latching speed adjustment, it separately closing speed adjustment valve 195 ° ~75 ° and 75 ° ~0 ° .
- @ Interior, Exterior Light medium, and heavy available for different width(weight) door application. thus allowing the door to close at the desired speed.
- @ Adopt high-class hydraulic oil; lubricate self, stable speed and durable.
- @ Proven, robust unit for doors up to Maximum 1200mm in width, 150kgs in weight.
- @ Accessories available for patch fitting.
- @ changeable spindle insert available to suit field conditions.

Technical Data

Spring strength	Standard	weak
Closing force in Nm,kg approx.	28	15
Standard doors up to 800mm		Yes
1100mm	Yes	
Door side	single open	L & R
Closing speed variable by valve adjustment	Yes	Yes
Weight in kg, approx.	5.0	
Dimensions in mm		
Length X Width X Height	291 X 78 X 50	

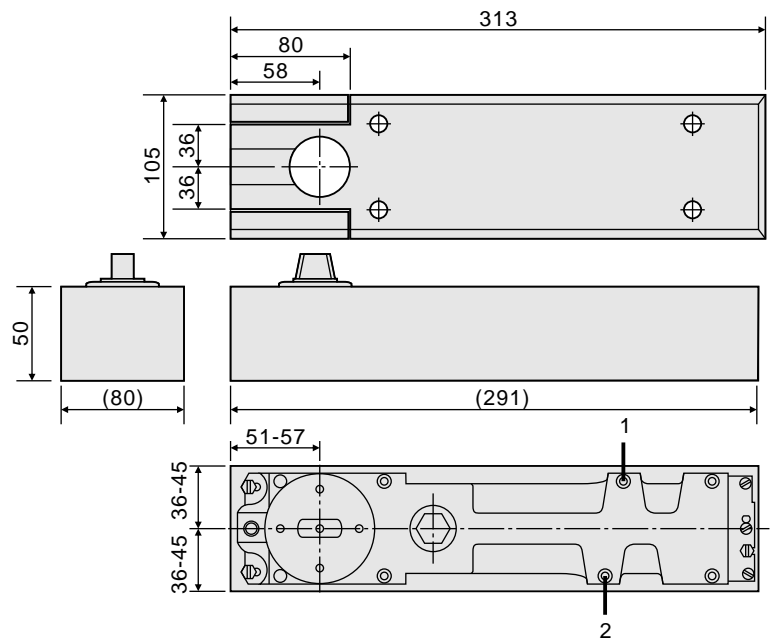
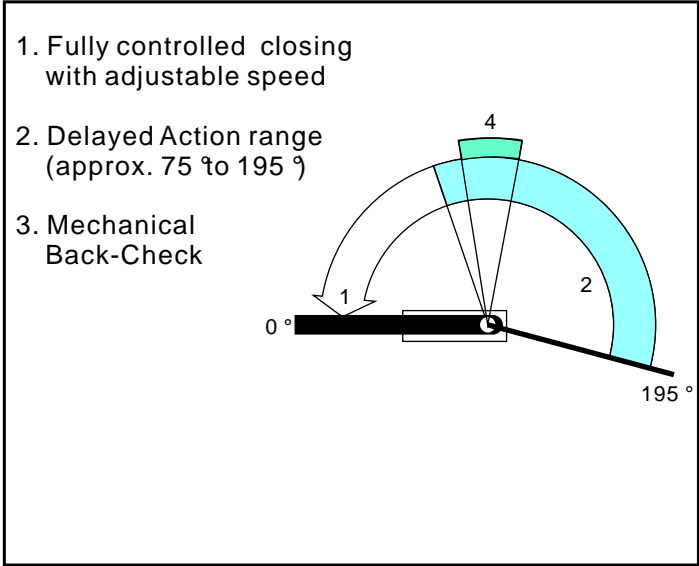
Selectable functions

Delayed Action (DA)

The integral delayed action feature serves to restrict door closing for a predetermined time so that disabled people, mothers with prams and people carrying bulky items are able to pass through the door without difficulty.

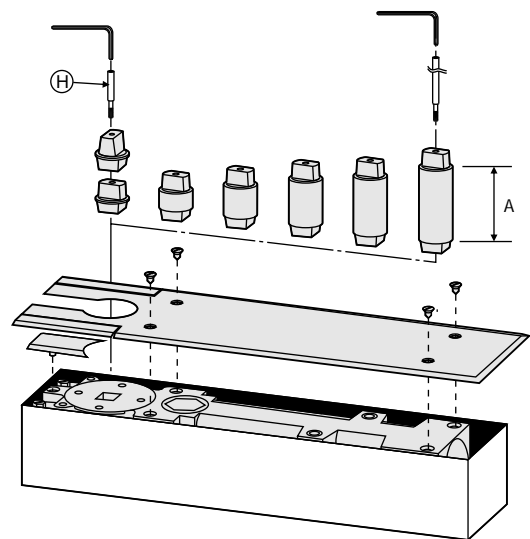
Back-Check (BC)

The integral mechanical Back-Check helps to prevents damage to the door and wall in the event of the door being opened with excessive force.



- 1.Closing speed Valve
- 2.Delayed action Valve

Options and accessories

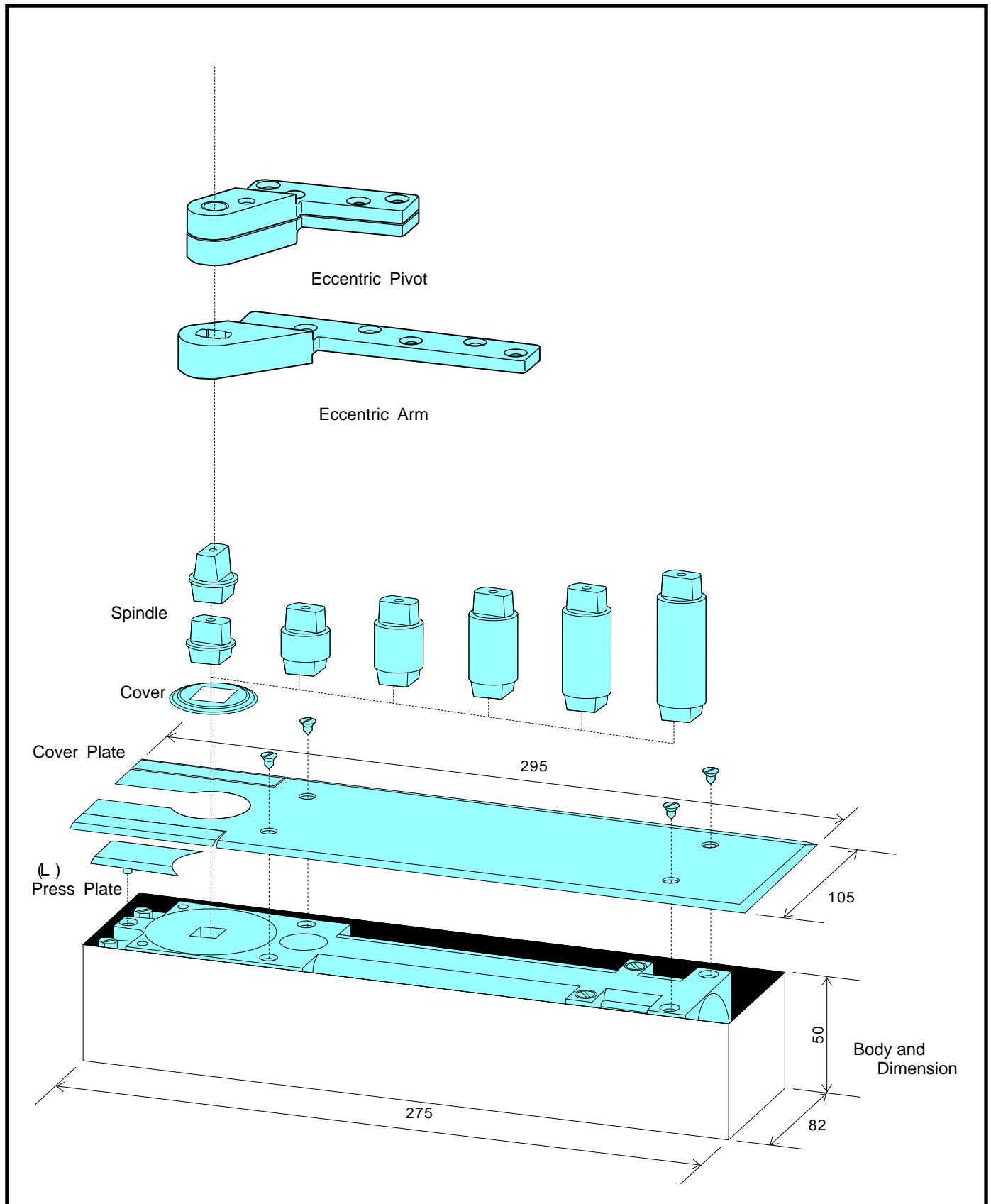


Interchangeable Spindles

CAT. NO	COLLAR (A) HEIGHT	DOOR (B) CLEARANCE
2040-AT-001A	*1/8"(3 mm)	5/16"(8 mm)
2040-AT-001A025	5/16"(8 mm)	1/2"(13 mm)
2040-AT-001A100	1/2"(13 mm)	11/16"(17 mm)
2040-AT-001A150	3/4"(18 mm)	15/16"(24 mm)
2040-AT-001A200	7/8"(23 mm)	1-1/16"(27 mm)
2040-AT-001A250	1-1/8"(28 mm)	1-5/16"(33 mm)
2040-AT-001A300	1-5/16"(33 mm)	1-7/16"(37 mm)

*Standard Spindle Supplied with Closer

DM 650



HENG KUOCO., LTD. — TAIWAN
KUNSHAN HENG KUO MACHINERY CO., LTD
 TAIWAN PLANT : No.136, Rende 5th St., Daxi Dist., Taoyuan City 335, Taiwan R.O.C.
 TEL : 886-3-380-2101 FAX : 886-3-380-2123
 CHINA PLANT : No.388 Lu Cnen Road kun shan City CHINA
 TEL : 86-512-861-86625 FAX : 86-512-575-70392