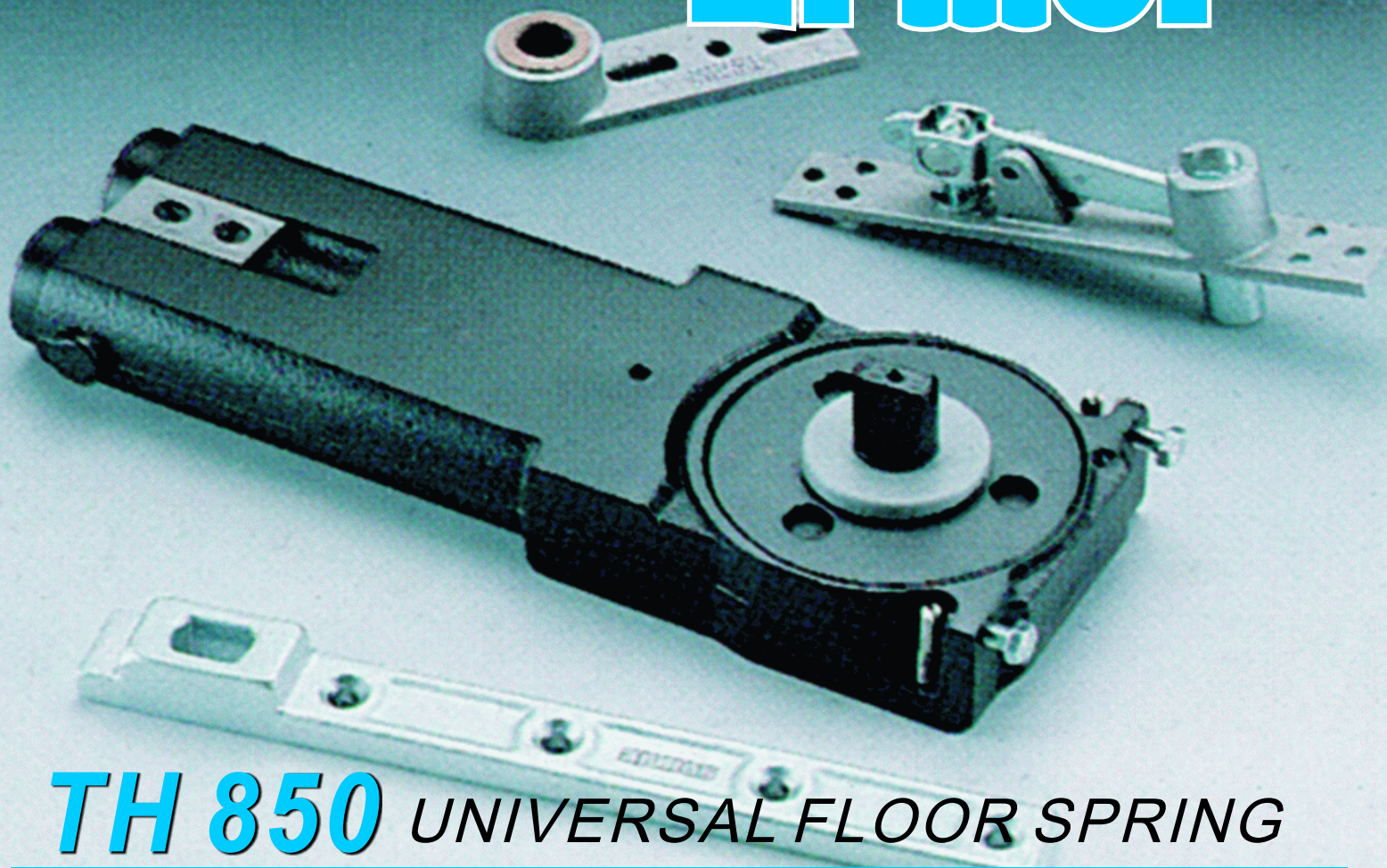


# armor



## TH 850 UNIVERSAL FLOOR SPRING

### FEATURES

- @ The 850 is a double action floor spring which has been specially developed for the aluminium and toughened glass door industries
- @ Specially designed for the movement patterns of double action doors
- @ Installation depth of just 40mm is a particular advantage since only a shallow pocket is required.
- @ wide range of functions :  
Back-Check, mechanical,  
Hold-Open ( optional extral )
- @ Max. Door weight up to 180kg in weight.
- @ Changeable spindle insert available to suit field conditions.

### Technical Data

Spring strength		Light	Medium	Heavy
Max. Doors up to (m/m)		950	1050	1250
Max. Door weight up to		70kg	110kg	130kg
Double ation door		Yes	Yes	Yes
Closing and Latching speed variable by valve adjustment		Yes	Yes	Yes
Back-Check, mechanical		Yes	Yes	Yes
Hold-open point	90 °	Option	Option	Option
	105 °	Option	Option	Option
No Hold-open point		Option	Option	Option
Dimensions in mm		306 X 108 X 40		
Length X Width X Height				

## Selectable functions

### Delayed Action

The integral delayed action feature serves to restrict door closing for a predetermined time so that disabled people, mothers with prams and predetermined time so that disabled people, mothers with prams and people carrying bulky items are able to pass through the door without difficulty.

### Back-Check

The integral mechanical Back-Check helps to prevents damage to the door and wall in the event of the door being opened with excessive force.

### Hold-Open

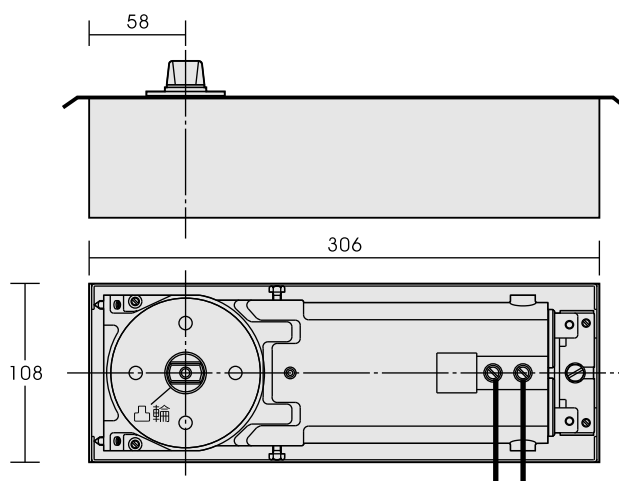
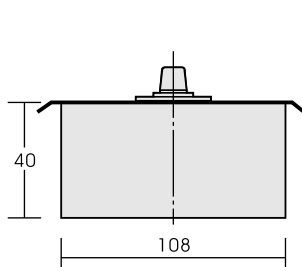
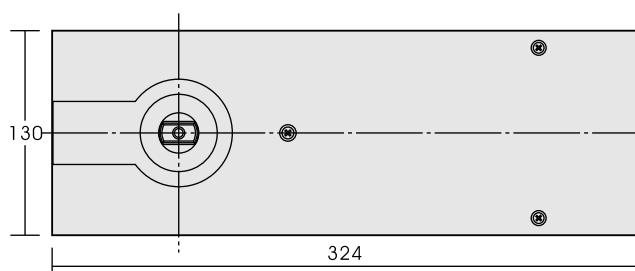
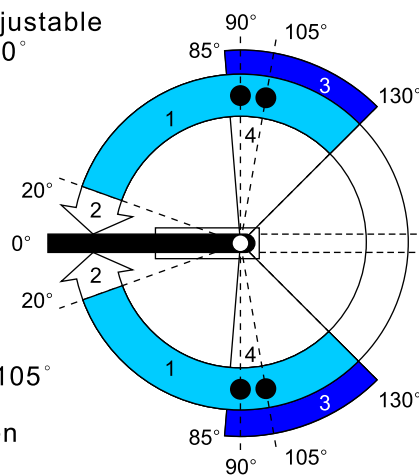
With the Hold-Open feature (optional extra), the door can be held at angles of either 90° or 105°

1. Closing speed adjustable range approx. 130° to approx. 20°

2. Latching speed adjustable

3. Back-check approx. Ca. 85°~105°

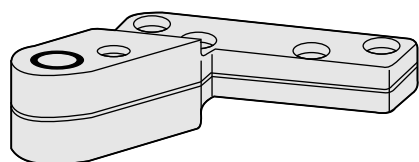
4. Positive hold-open at 90° or 105°



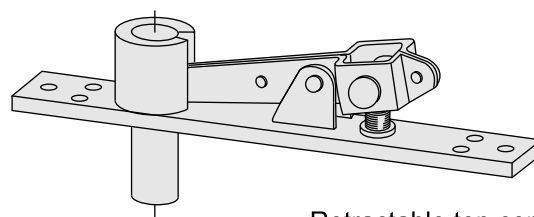
1. Swing speed

2. Latching speed

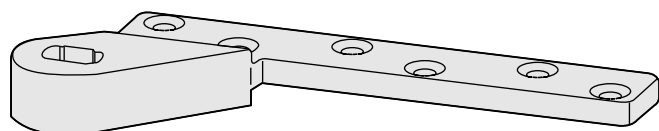
## Options and accessories



Eccentric Pivot



Retractable top centre



Eccentric arm



HENG KUOCO., LTD. — TAIWAN

KUNSHAN HENG KUO MACHINERY CO., LTD

TAIWAN PLANT : No.136, Rende 5th St., Daxi Dist., Taoyuan City 335, Taiwan R.O.C.

TEL : 886-3-380-2101 FAX : 886-3-380-2123

CHINA PLANT : No.388 Lu Cnen Road kun shan City CHINA

TEL : 86-512-861-86625 FAX : 86-512-575-70392