

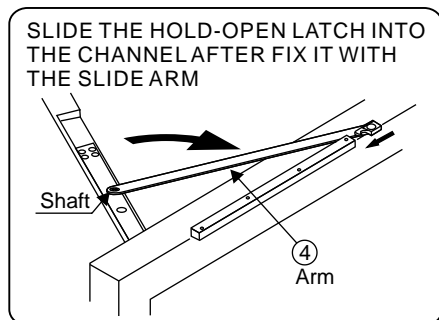
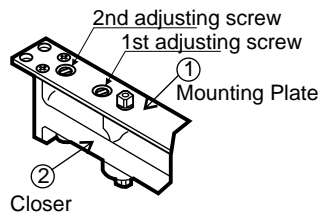
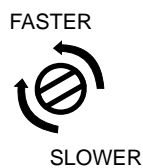
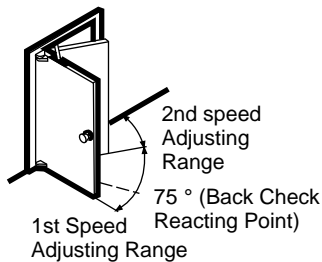
armor

CD40 SERIES DOOR CLOSER

- (1) CD-40 Series Door Closer may concealed in any kind of luxury doors and frame (slim closer body 31mm in thickness) to make the door and frame tidy and entirely.
- (2) Reversible valve system do not have handed problem in installation (less inventory advantage).
- (3) Precise adjustable valve function for control door closing smoothly.
- (4) Kindly design of slide arm set for easy setup the Hold-open to desirable position

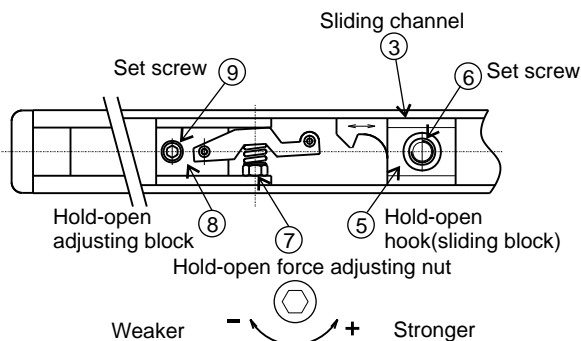


MODEL No	DOOR WIDTH (mm)			CLOSING FORCE (Kgf.m)	DOOR WEIGHT (Kgs)
	INTERIOR DOOR	EXTERIOR DOOR			
		SWING OUT	SWING IN		
CD-42	900	800	700	1.0	25 45
CD-43	950	900	800	1.7	40 65



INSTALLATION INSTRUCTIONS

- (1) Mount closer ② on mounting plate ① by attached 4-M5 X 10 machine screws.
- (2) Place closer with mounting plate ① and sliding channel ③ into respective notch of door and frame then fixed by 4-M5X15 machine screws (or 4-#1 (5) X 25 wood screws) according to the dimension shown in the right side.
- (3) Attach arm ④ to sliding block ⑤ and tighten by screw ⑥ .
- (4) Open door about 60° from closed position, using attached spanner to rotate closer's shaft clockwise from its rest position about 90° fix the square hole of arm ④ to closer's shaft. Tighten arm screw securely.



HOLD-OPEN ADJUSTMENT INSTRUCTIONS

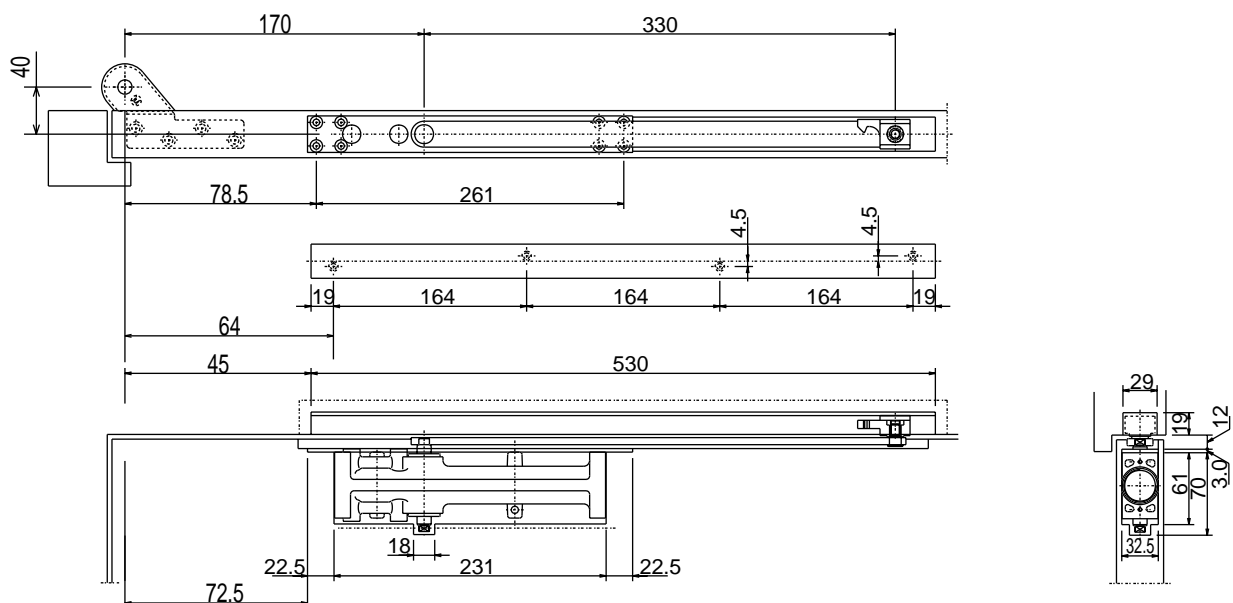
- (1) Before install, sliding the sliding block ⑤ and adjusting block ⑧ into channel ③ .
- (2) Open door to desire hold-open angle and tighten the set screw ⑨ on adjusting block ⑧ .
- (3) Adjust the hold-open force please refer to the drawing shown in left.
- (4) Delete the hold-open function to remove the adjusting block ⑧ .



HENG KUO CO., LTD. – (TAIWAN)
KUNSHAN HENG KUO MACHINERY CO., LTD

TAIWAN PLANT : No.136, Rende 5th St., Daxi Dist.,
Taoyuan City 335, Taiwan (R.O.C.)
TEL : 886-3-380-2101 FAX : 886-3-380-2123
CHINA PLANT : No .388 Lu Cnen Road kun Shan City CHINA
TEL : 86-512-861-86625 FAX : 86-512-575-70392

STANDARD INSTALLATION (105 ° opening)



TOP HUNG INSTALLATION (105 ° opening)

