

armor

8800 SERIES Door Closer

FEATURES

- (1) UL listed conforms to UL10C and UBC 7-2,1977
- (2) Aluminium alloy die casting body. Modernize style, sliding dress cover.
- (3) Suitable for hollow steel and wooden doors with any kind of frame, reversible hand installed.
- (4) Multi-size adjustable spring, from size 1 to size 4 and from size 2 to 5
- (5) According to installed dimension be able to select desirable opening angle.
- (6) Universal application for STANDARD, TOP JAMB and PARALLEL arm installation.
- (7) Precise two speed adjusting valve for control door closing smoothly.
- (8) Standard adjustable BACK CHECK.



SPRING TENSION-Door Size Chart

(Size 1~4)

No. OF TURNS OF SPRING ADJUSTING VALVE	REGULAR ARM			DOOR WEIGHT	
	INTERIOR DOOR	EXTERIOR DOOR		Minimum lbf.	(Ret) lbs
		Swing Out	Swing In		
1	5 lbs Opening Force			2	44
6	38"(914mm)	32"(813mm)	28"(711mm)	3	44~88
13	42"(1067mm)	38"(914mm)	32"(813mm)	5	88~132
19	48"(1219mm)	42"(1067mm)	38"(914mm)	8	132~176

(Size 2~5)

NO. OF TURNS OF SPRING ADJUSTING VALVE	REGULAR ARM			DOOR WEIGHT	
	INTERIOR DOOR	EXTERIOR DOOR		Minimum lbf	(Ret) lbs
		Swing Out	Swing In		
1	8 1/2 lbs Opening Force			3	44
6	38"(914mm)	32"(813mm)	28"(711mm)	4.5	44~88
13	42"(1067mm)	38"(914mm)	32"(813mm)	6	88~132
17	48"(1219mm)	42"(1067mm)	38"(914mm)	8	132~176
19	54"(1372mm)	48"(1219mm)	42"(1067mm)	11	176~220

(-) counterclockwise, (+) clockwise

ADJUSTMENT

- (1) Individual two speed adjusting valves for adjust both closing speed from 180 °~15 ° and 15 °~0 °.
- (2) Speed adjusting valves turned clockwise for slow down the closing speed, turned counterclockwise for speed up the closing speed.
- (3) The closer speed adjust range from 180 ° to 15 ° and latching speed adjust from 15 ° to 0 ° (refer to FIG. A).
- (4) Back check function act on door open to about 75 ° to avoid damage to doorware, to adjust the reaction of BC Please refer to FIG. B .
- (5) Choose either of slide arm or cam hold-open arm (option), it may hold the door in any of your set-up point within 75 ° to 180 °

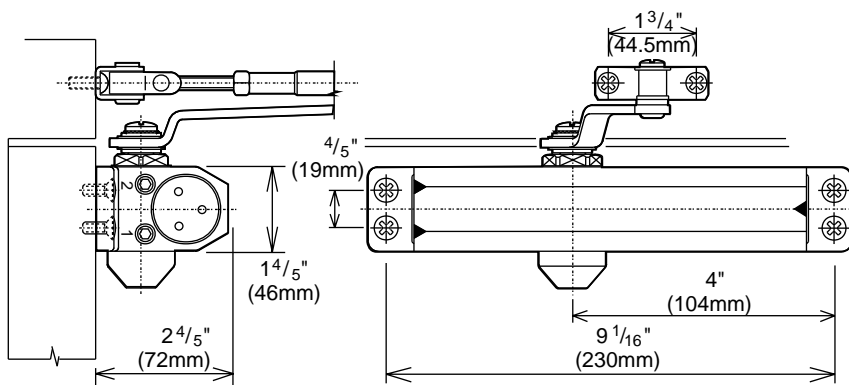


FIG. A

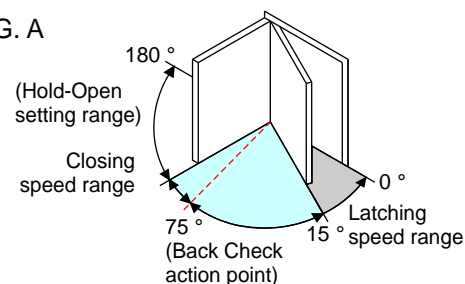
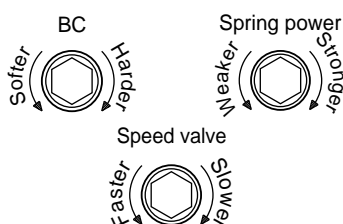


FIG. B



HENG KUO CO., LTD. – (TAIWAN)
KUNSHAN HENG KUO MACHINERY CO., LTD

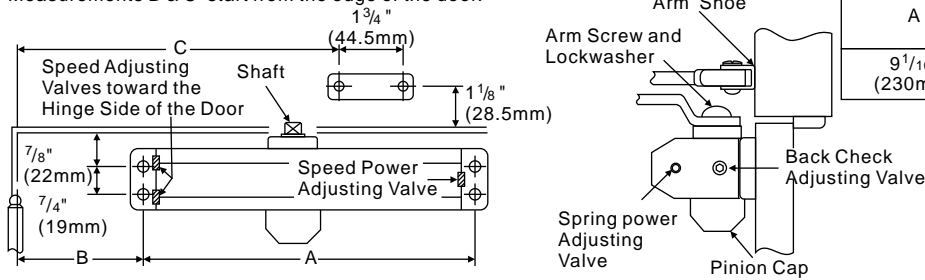
TAIWAN PLANT : No136, Ren De 5, Ta-Shi, Tao Yuan Hsien,
Taiwan R.O.C.
TEL : 886-3-380-2101 FAX : 886-3-380-2123
CHINA PLANT : No.388 Lu Chen Road kun Shan City CHINA
TEL : 86-512-861-86625 FAX : 86-512-575-70392

SINCE 1954

Installation instructions

STANDARD INSTALLATION

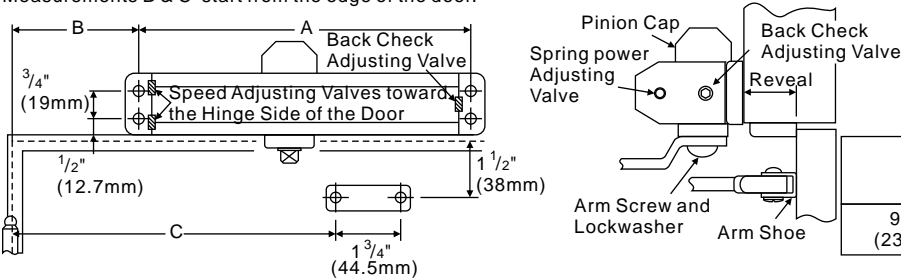
Right hand door illustrated. Same dimensions apply to left hand doors
Measurements B & C start from the edge of the door.



A	FOR OPENING TO 120 °		FOR OPENING 120 °~180 °	
	B	C	B	C
9 ¹ / ₁₆ " (230mm)	5 ⁷ / ₈ " (149mm)	12 ¹ / ₁₆ " (306mm)	3 ¹ / ₄ " (82.5mm)	8 ⁷ / ₈ " (225mm)

TOP JAMB INSTALLATION

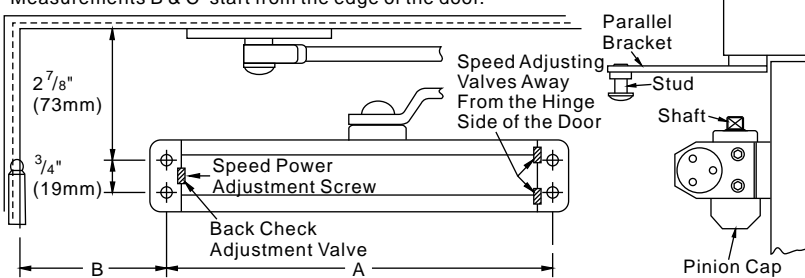
Left hand door illustrated. Same dimensions apply to right hand doors
Measurements B & C start from the edge of the door.



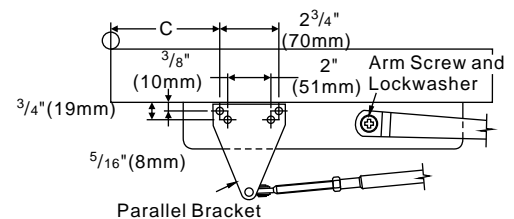
A	FOR OPENING TO 120 °		FOR OPENING 120 °~180 °	
	B	C	B	C
9 ¹ / ₁₆ " (230mm)	5 ¹³ / ₁₆ " (148mm)	12" (305mm)	4 ¹ / ₈ " (105mm)	10 ⁵ / ₈ " (262mm)

PARALLEL ARM INSTALLATION

Left hand door illustrated. Same dimensions apply to right hand doors
Measurements B & C start from the edge of the door.



A	FOR OPENING TO 120 °		FOR OPENING 120 °~180 °	
	B	C	B	C
9 ¹ / ₁₆ " (230mm)	7 ¹⁵ / ₁₆ " (176mm)	8 ⁵ / ₈ " (219mm)	6 ⁷ / ₁₆ " (164mm)	7 ¹ / ₈ " (181mm)



Finished color Abbreviations : AL (Aluminium) 、 DU (Dark Bronze) 、 BZ (Gold)

Three years warranty from delivery.