



8730 SERIES Door Closer

FEATURES

- (1) UL listed conforms UL10C and UBC 7-2, 1997
- (2) Aluminium alloy die casting body. Modernize style, sliding dress cover.
- (3) Suitable for hollow steel and wood doors with any kind of frame, reversible hand in installation
- (4) Provide whole series from size 3 to size 5 for wider range application.
- (5) According to installed dimension be able to select desirable opening angle.
- (6) Universal applications STANDARD, TOP JAMB and PARALLEL arm installation.
- (7) Precise two speed adjusting valve for control door closing smoothly.
- (8) Multi-function ready for use, DELAY ACTION, BACK CHECK, Both can be adjust in field for different application. But DA or BC function can not be built in same closer, should be choose either BC or DA



SPRING TENSION-Door Size Chart

SIZE NO .	STANDARD / TOP JAMB INSTALLATION				PARALLEL INSTALLATION				DOOR WEIGHT (Ret) lbs
	INTERIOR DOOR	EXTERIOR DOOR		Minimum lbf	INTERIOR DOOR	EXTERIOR DOOR		Minimum lbf	
		Swing Out	Swing In			Swing Out	Swing In		
3	40"(1016mm)	34"(864mm)	32"(813mm)	5	40"(1016mm)	34"(864mm)	32"(813mm)	5	40~60
4	48"(1219mm)	40"(1016mm)	38"(965mm)	8	48"(1219mm)	40"(1016mm)	38"(965mm)	8	60~80
5	52"(1321mm)	48"(1219mm)	40"(1016mm)	11	52"(1321mm)	48"(1219mm)	40"(1016mm)	11	80~100

ADJUSTMENT

- (1) Individual two speed adjusting valves for adjust both closing speed from 180 °~15 ° and 15 °~0 °.
- (2) Speed adjusting valves turned clockwise for slow down the closing speed, turned counterclockwise for speed up the closing speed.
- (3) The closing speed adjust range from 180 ° to 15 ° and latching speed adjust from 15 ° to 0 ° (refer to FIG. A).
- (4) Back check function act on door open to about 75 ° to avoid damage to doorware, to adjust the reaction of BC Please refer to FIG. B .
- (5) Choose either of slide arm or cam hold-open arm (option), it may hold the door in any of your set-up point within 75 ° to 180 °
- (6) Delay action (DA) : When door open exceed 75 °, even if release, the door will delayed closing until door achieve 75 ° position for wheelchair, disabled or busy door convenience.

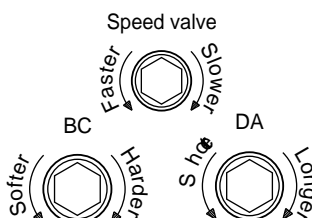
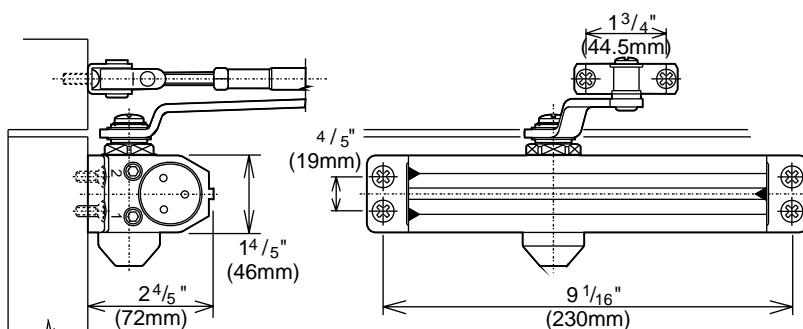


FIG. A

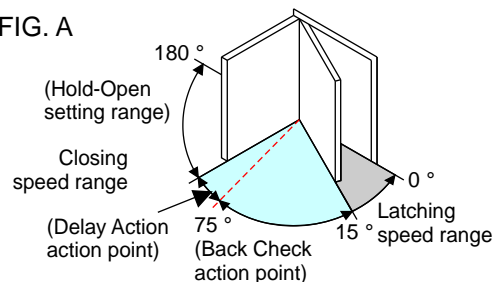


FIG. B



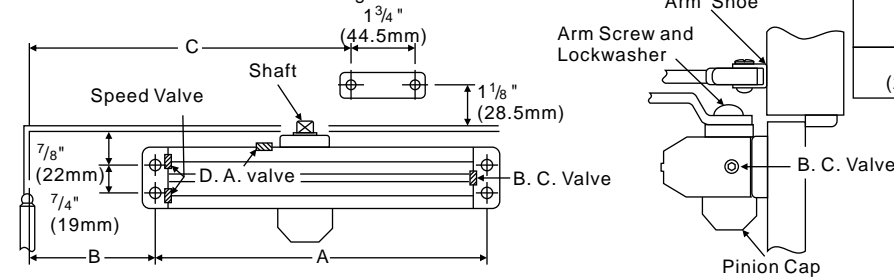
HENG KUO CO., LTD. – (TAIWAN)
KUNSHAN HENG KUO MACHINERY CO., LTD

TAIWAN PLANT : No136, Ren De 5, Ta-Shi, Tao Yuan Hsien, Taiwan R.O.C.
TEL : 886-3-380-2101 FAX : 886-3-380-2123
CHINA PLANT : No.388 Lu Chen Road kun Shan City CHINA
TEL : 86-512-861-86625 FAX : 86-512-575-70392

Installation instructions

STANDARD INSTALLATION

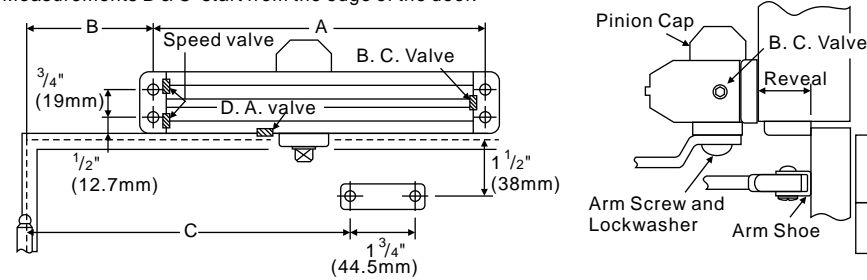
Right hand door illustrated. Same dimensions apply to left hand doors
Measurements B & C start from the edge of the door.



A	FOR OPENING TO 120 °		FOR OPENING 120 °~180 °	
	B	C	B	C
9 ¹ / ₁₆ " (230mm)	5 ⁷ / ₈ " (149mm)	12 ¹ / ₁₆ " (306mm)	3 ¹ / ₄ " (82.5mm)	8 ⁷ / ₈ " (225mm)

TOP JAMB INSTALLATION

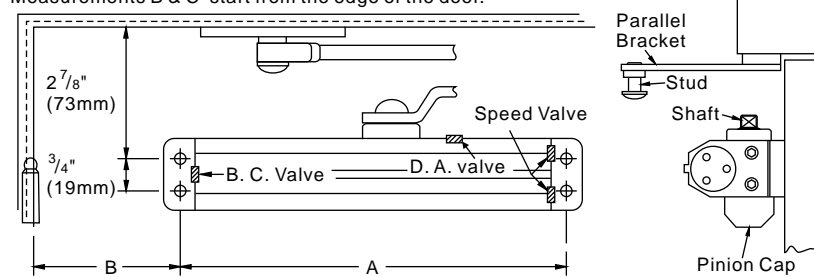
Left hand door illustrated. Same dimensions apply to right hand doors
Measurements B & C start from the edge of the door.



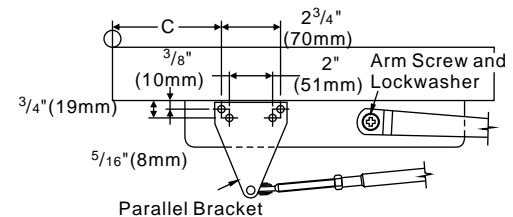
A	FOR OPENING TO 120 °		FOR OPENING 120 °~180 °	
	B	C	B	C
9 ¹ / ₁₆ " (230mm)	5 ¹³ / ₁₆ " (148mm)	12" (305mm)	4 ¹ / ₈ " (105mm)	10 ⁵ / ₈ " (262mm)

PARALLEL ARM INSTALLATION

Left hand door illustrated. Same dimensions apply to right hand doors
Measurements B & C start from the edge of the door.



A	FOR OPENING TO 120 °		FOR OPENING 120 °~180 °	
	B	C	B	C
9 ¹ / ₁₆ " (230mm)	7 ¹⁵ / ₁₆ " (176mm)	8 ⁵ / ₈ " (219mm)	6 ⁷ / ₁₆ " (164mm)	7 ¹ / ₈ " (181mm)



Finished color Abbreviations : AL (Aluminium) 、 DU (Dark Bronze) 、 BZ (Gold)

Three years warranty from delivery.