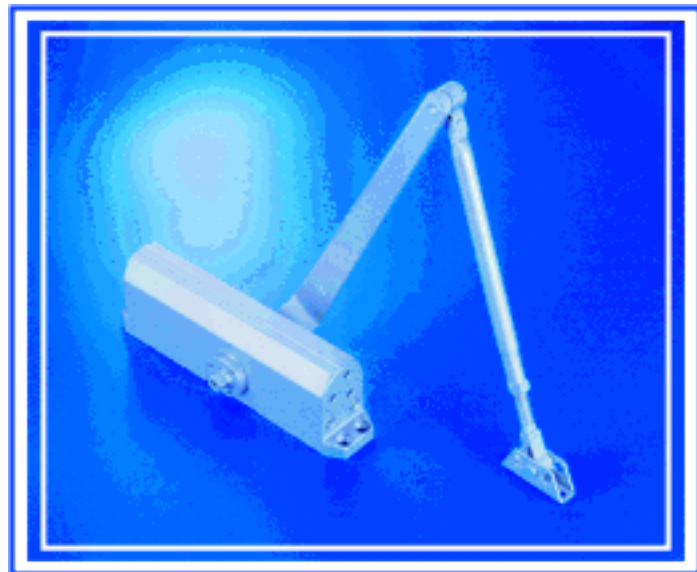




8700 SERIES Grade One Door Closer

FEATURES

- (1) UL listed conforms UL10C and UBC 7-2,1997; Listed ANSI GRADE 1 list.
- (2) Aluminium alloy die casting body. Modernize style, sliding dress cover.
- (3) Suitable For hollow steel and wooden doors with any kind of frame, reversible hand installation.
- (4) Adjustable spring power designed, provide two of power range version, from size 1 to size 4 and from size 2 to 5 stepless regulation, less inventory for wider user needs.
- (5) According to installed dimension be able to select desirable opening angle.
- (6) Universal application for STANDARD, TOP JAMB and PARALLEL arm installation
- (7) Precise two speed adjusting valve for control door closing smoothly.
- (8) adjustable DELAY ACTION, BACK CHECK, Both can be adjust in field for different application.



SPRING TENSION-Door Size Chart

(Size 1~4)

No. OF TURNS OF SPRING ADJUSTING VALVE	REGULAR ARM				DOOR WEIGHT
	INTERIOR DOOR	EXTERIOR DOOR		Minimum Lbf.	(Ret) lbs
		Swing Out	Swing In		
1	5 lbs Opening Force			2	44
6	38"(914mm)	32"(813mm)	28"(711mm)	3	44~88
13	42"(1067mm)	38"(914mm)	32"(813mm)	5	88~132
19	48"(1219mm)	42"(1067mm)	38"(914mm)	8	132~176

(Size 2~5)

NO. OF TURNS OF SPRING ADJUSTING VALVE	REGULAR ARM				DOOR WEIGHT
	INTERIOR DOOR	EXTERIOR DOOR		Minimum Lbf	(Ret) lbs
		Swing Out	Swing In		
1	8 1/2 lbs Opening Force				3
6	38"(914mm)	32"(813mm)	28"(711mm)	4.5	44~88
13	42"(1067mm)	38"(914mm)	32"(813mm)	6	88~132
17	48"(1219mm)	42"(1067mm)	38"(914mm)	8	132~176
19	54"(1372mm)	48"(1219mm)	42"(1067mm)	11	176~220

(-) counterclockwise, (+) clockwise

ADJUSTMENT

- (1) Individual two speed adjusting valves for adjust both closing speed from 180°~15° and 15°~0°.
- (2) Speed adjusting valves turned clockwise for slow down the closing speed, turned counterclockwise for speed up the closing speed.
- (3) The closing speed adjust range from 180° to 15° and latching speed adjust from 15° to 0° (refer to FIG. A).
- (4) Back check function act on door open to about 75° to avoid damage to doorware, to adjust the reaction of BC Please refer to FIG. B.
- (5) Choose either of slide arm or cam hold-open arm (option), it may hold the door in any of your set-up point within 75° to 180°.
- (6) Delay action (DA) : When door open exceed 75°, even if release, the door will delayed closing until door achieve 75° position for wheelchair, disabled or busy door convenience.

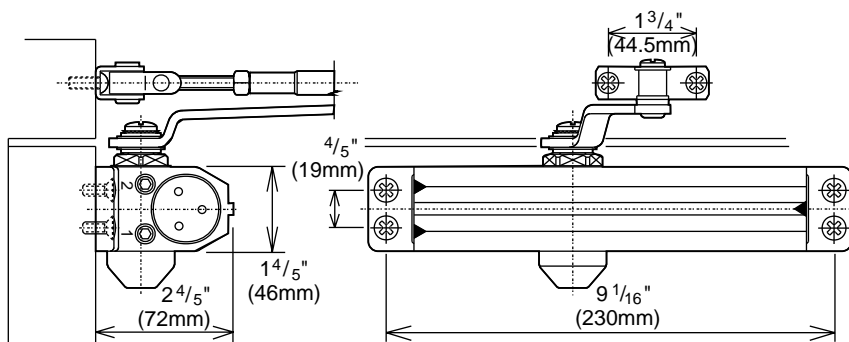


FIG. A

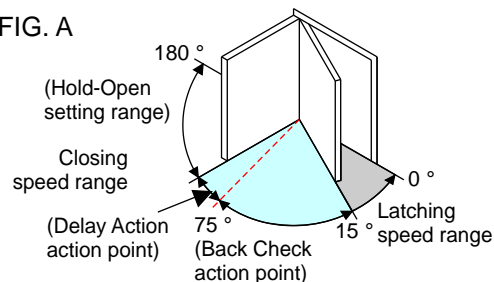
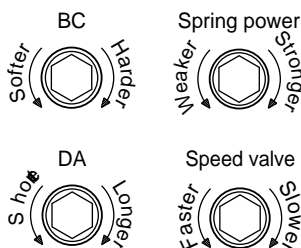


FIG. B



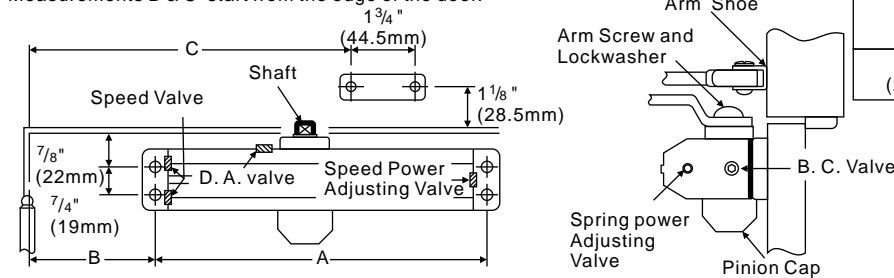
HENG KUO CO., LTD. - (TAIWAN)
KUNSHAN HENG KUO MACHINERY CO., LTD

TAIWAN PLANT : No136, Ren De 5, Ta-Shi, Tao Yuan Hsien,
Taiwan R.O.C.
TEL : 886-3-380-2101 FAX : 886-3-380-2123
CHINA PLANT : No.388 Lu Chen Road kun Shan City CHINA
TEL : 86-512-861-86625 FAX : 86-512-575-70392

Installation instructions

STANDARD INSTALLATION

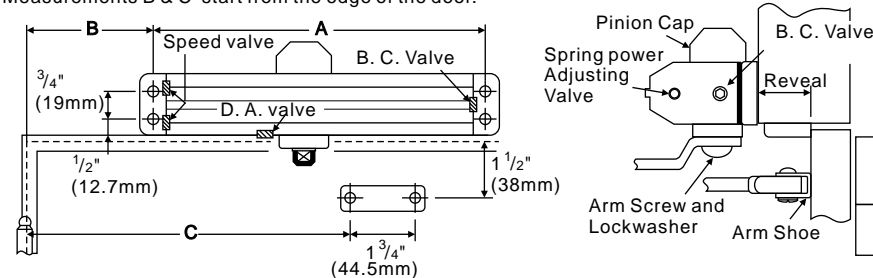
Right hand door illustrated. Same dimensions apply to left hand doors
Measurements B & C start from the edge of the door.



A	FOR OPENING TO 120 °		FOR OPENING 120 °~180 °	
	B	C	B	C
9 1/16" (230mm)	5 7/8" (149mm)	12 1/16" (306mm)	3 1/4" (82.5mm)	8 7/8" (225mm)

TOP JAMB INSTALLATION

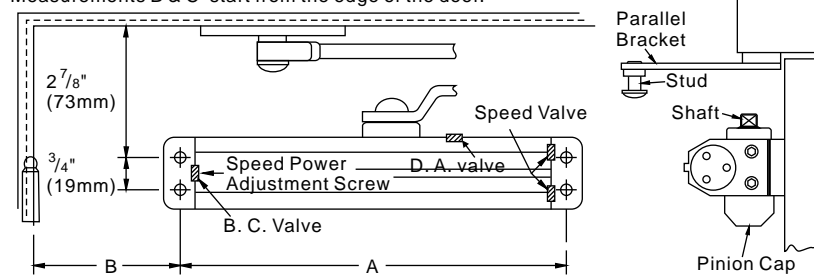
Left hand door illustrated. Same dimensions apply to right hand doors
Measurements B & C start from the edge of the door.



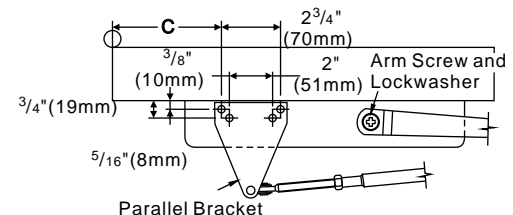
A	FOR OPENING TO 120 °		FOR OPENING 120 °~180 °	
	B	C	B	C
9 1/16" (230mm)	5 13/16" (148mm)	12" (305mm)	4 1/8" (105mm)	10 5/16" (262mm)

PARALLEL ARM INSTALLATION

Left hand door illustrated. Same dimensions apply to right hand doors
Measurements B & C start from the edge of the door.



A	FOR OPENING TO 120 °		FOR OPENING 120 °~180 °	
	B	C	B	C
9 1/16" (230mm)	7 15/16" (176mm)	8 5/8" (219mm)	6 7/16" (164mm)	7 1/8" (181mm)



Finished color Abbreviations : AL (Aluminium) 、 DU (Dark Bronze) 、 BZ (Gold)

Three years warranty from delivery.