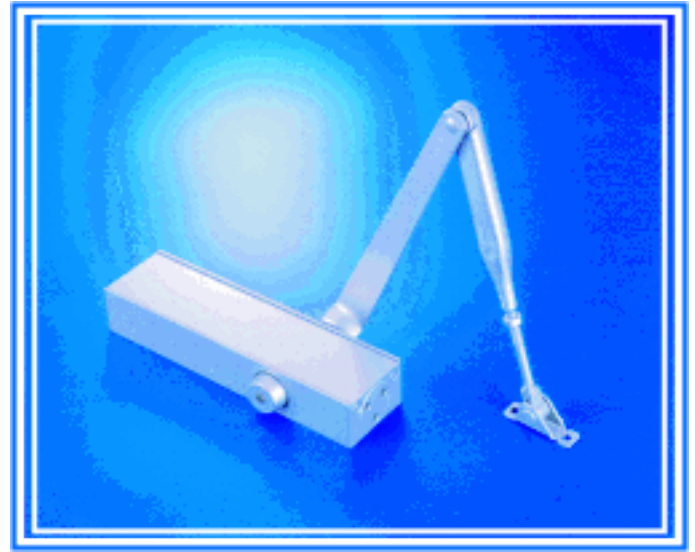




1300 SERIES DOOR CLOSER

FEATURES

- (1) Hydraulic door closer
- (2) Aluminium alloy die casting body. Modernize style, sliding dress cover.
- (3) Suitable for hollow steel, and wood doors with any kind of frame, reversible hand installation.
- (4) Adjustable spring power, from size 2 to size 4 Multi size .
- (5) According to installed dimension be able to select desirable opening angle.
- (6) Universal application for STANDARD, TOP JAMB and PARALLEL arm installation.
- (7) Precise two speed adjusting valve for control door closing smoothly.
- (8) Standard adjustable BACK CHECK .



SELECTION CHART

No . of turned	Power size	STANDARD / TOP JAMB INSTALLATION				PARALLEL INSTALLATION				DOOR WEIGHT (Ret) lbs
		Interior door width (mm)	Exterior door width(mm)		Minimum Lbf.	Interior door width (mm)	Exterior door width(mm)		Minimum Lbf.	
			Swing out	Swing in			Swing out	Swing in		
2	-6	900	800	700	3	800	700	600	2	50~100
3	0	950	900	800	5	900	800	700	3	80~150
4	5	1050	950	900	8	950	900	800	5	130~200

(-) counterclockwise, (+) clockwise

ADJUSTMENT

- (1) Individual two speed adjusting valves for adjust both closing speed from 180 °~15 ° and 15 °~0 ° .
- (2) Speed adjusting valves turned clockwise for slow down the closing speed, turned counterclockwise for speed up the closing speed.
- (3) The closing speed adjust range from 180 ° to 15 ° and latching speed adjust from 15 ° to 0 ° (refer to FIG. B).
- (4) Back check function act on door open to about 75 ° to avoid damage to doorware, to adjust the reaction of BC Please refer to FIG. A .
- (5) Choose either of slide arm or cam hold-open arm (option), it may hold the door in any of your set-up point within 75 ° to 180 °

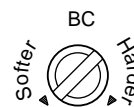
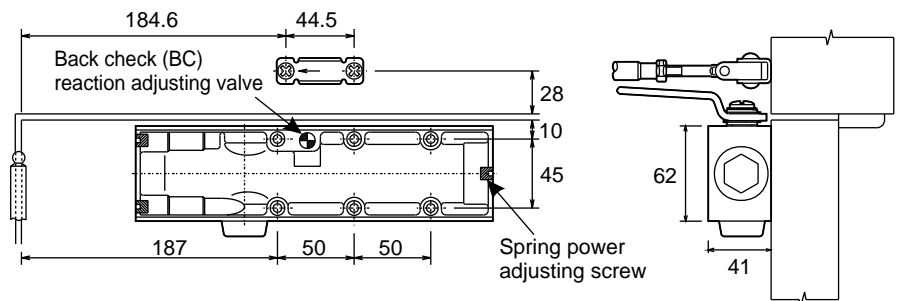


FIG. A

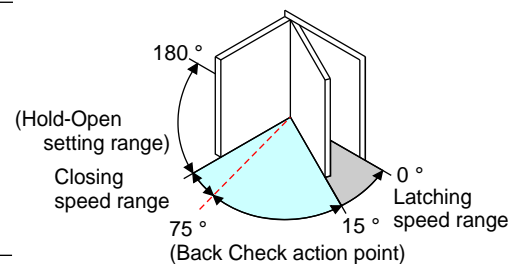
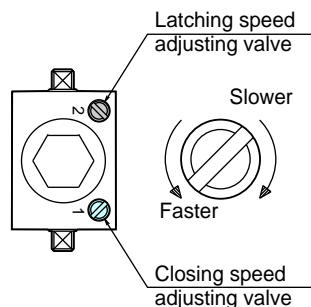


FIG. B



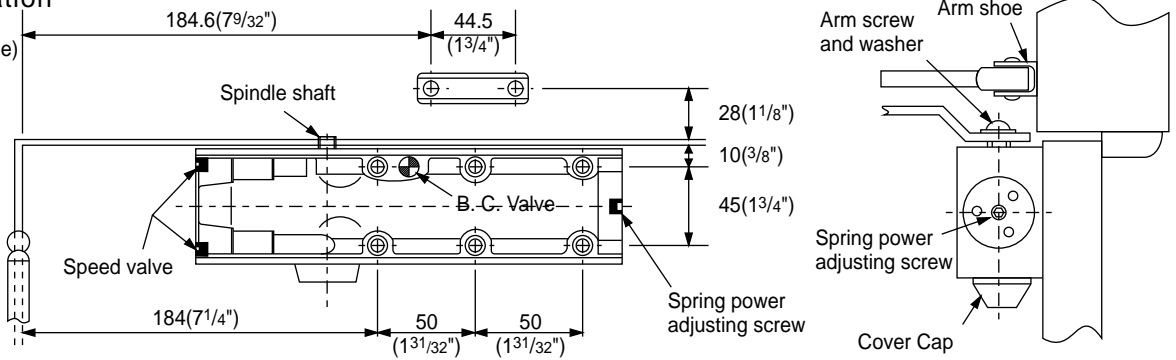
HENG KUO CO., LTD. - (TAIWAN)
KUNSHAN HENG KUO MACHINERY CO., LTD

TAIWAN PLANT : No136, Ren De 5, Ta-Shi, Tao Yuan Hsien, Taiwan R.O.C.
TEL : 886-3-380-2101 FAX : 886-3-380-2123
CHINA PLANT : No.388 Lu Cnen Road kun Shan City CHINA
TEL : 86-512-861-86625 FAX : 86-512-575-70392

Installation instructions (for 180° opening)

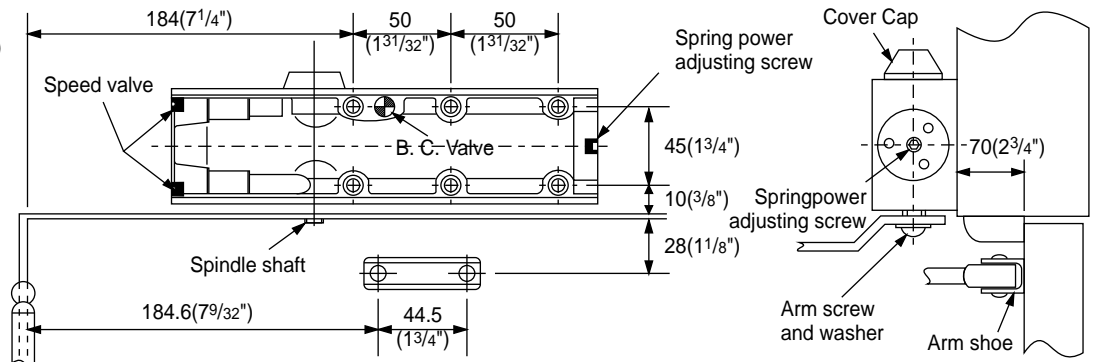
Standard Installation

(Closer mounted on door on pull side)



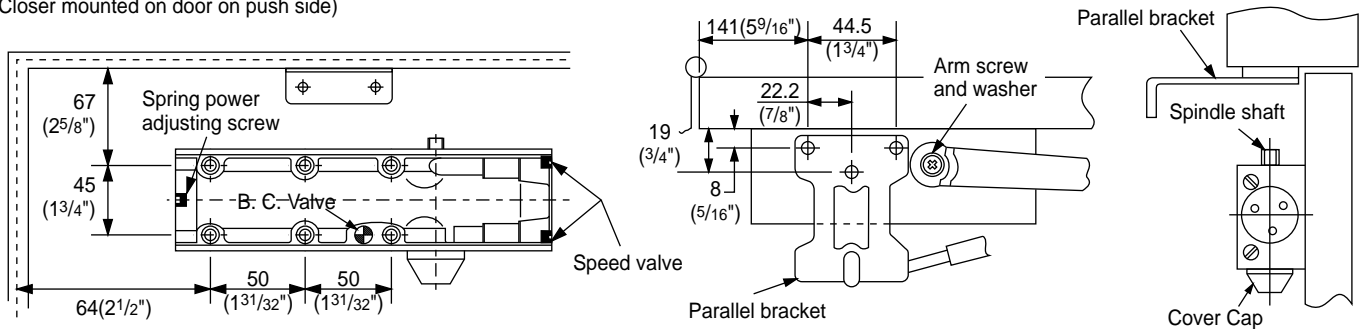
Top Jamb Installation

(Closer mounted on top jamb on push side of door)



Parallel Installation

(Closer mounted on door on push side)



Finished color Abbreviations : AL (Aluminium) 、 DU (Dark Bronze) 、 BZ (Gold)

Three years warranty from delivery.